

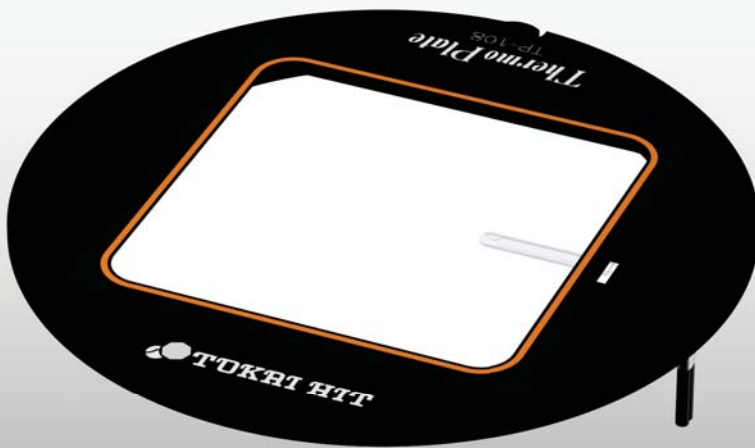


# ThermoPlate®

## Microscope-Stage Automatic Thermocontrol System

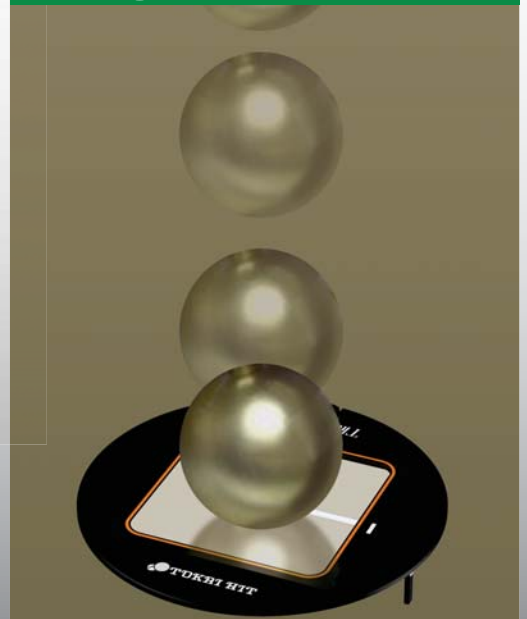
# New TPX SERIES HIGH-END MODEL

# 10 year warranty || Stress-Free from glass breakage



- ✓ With stylish orange line !
- ✓ Whole area 0.5mm glass thickness !  
(for inverted microscopes only)

### Strengthen Glass Applied



### Smart 1 Enable ease of temperature measurement

Sterilized sensor can measure the actual sample temperature. Also, it enables on-site calibration to provide optimal temperature setting at your laboratory.



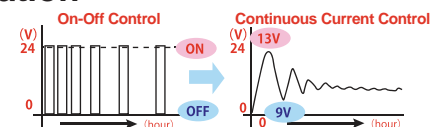
### Smart 2 Temperature Management Software TEM

Monitors, records and logs sample or plate temperature which the sensor measures. Save data in CSV format which can be used in spreadsheets.

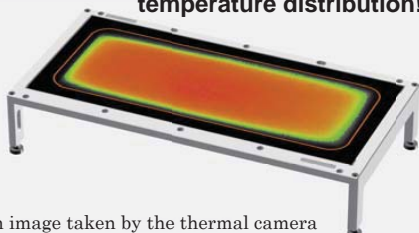


### Smart 3 Stable imaging, effective for high magnification

In addition to PID control, TPX features Continuous Current Control, minimizing focus drift generated by heat compared to the standard ON/OFF control method. Especially effective for observation when high magnification is required.



ThermoPlate provides uniform temperature distribution!



An image taken by the thermal camera

Environmentally and user-friendly design

Along with its great functionality and high performance, TPX's new design create a warm, relaxed lab environment. Five color variations are available. Please choose your color!



Colorful controller makes lab comfortable!

# TPX LINE-UP

\* Temperature regulation range of TPX series: from ambient+5°C to 60°C



## TPX-110R / 108R

(successor model of TP-110R / 110R05 / 108R / 108R05)  
Applicable stage: Olympus Cross stage / Nikon Rectangular stage  
Dimensions:  $\phi$  110 (mm) /  $\phi$  108 (mm)  
Heating area: W70×D70 (mm)  
Glass thickness: 0.5 (mm)



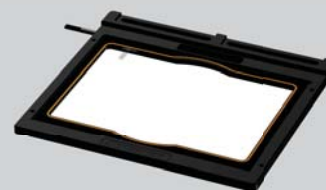
## TPX-SQFT

(successor model of TP-SQFT / SQFT05)  
Applicable stage: The stage can be installed on the mounting frame K type  
Dimensions: W160×D110×H3 (mm)  
Heating part: W130×D86 (mm)  
Glass thickness: 0.5 (mm)



## TPX-S

(successor model of TP-S)  
Applicable stage: XY mechanical stage for upright microscope  
Dimensions: W142×D115×H5 (mm)  
Heating area: W128×D95 (mm)  
Glass thickness: 1.0 (mm)



## TPX-SZX2A

(successor model of TP-SZX2A)  
Applicable illumination base: SZX2-ILLB, SZX2-ILLD, SZS2-ILLK  
Dimensions: W236×D207×H7 (mm)  
Heating part: W162×D152 (mm)  
Glass thickness: 1.0 (mm)



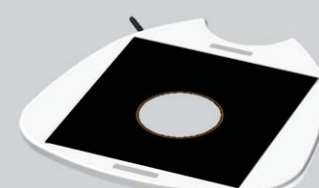
## TPX-SMZ25

(successor model of TP-SMZ25)  
Applicable illumination base: P2-PB / DBC / DBF / PS32 P-DSL32 / DSF32  
Dimensions: W251×D238×H7 (mm)  
Heating part: W160×D150 (mm)  
Glass thickness: 1.0 (mm)



## TPX-SMZSL

(successor model of TP-SMZSL)  
Applicable illumination base: C-DSD, C-DSS, CBD  
Dimensions: W254×D234×H9 (mm)  
Heating part: W175×D185 (mm)  
Glass thickness: 1.0 (mm)



## TPX-UNI

(successor model of TP-UNI)  
Universal model for stereo microscope  
Dimensions: W254×D234×H9 (mm)  
Height adjustable range: 75~100 (mm)  
Heating part: W400×D175 (mm) Glass thickness: 1.0 (mm)



Other ThermoPlate TP series are still available.