

# Stage Top Incubator

## INU-WDSMP series "For Live Cell Imaging"

For automated multi-point time-lapse and screening  
Stage Top Incubator + Original Motorized Stage

### Culture with Multi-Well Plate

Thanks to newly developed original slim motorized stage, cell-culture using multi-well plate under inverted microscope is now possible.

### Ready access of all wells with uniform environment

Our unique heater configuration allows entire bottom surface of multi-well plates to be heated evenly. All wells are available for observation by moving XY stage.

### No Big Box Needed

INU provides ideal temperature, humidity and gas environment in a compact chamber, eliminating the need to cover the whole microscope with a bulky box. INU allows easy access to specimen, easy set up and doesn't interfere with related devices when systemized.

### Long-Term Stable Environment

The same conditions as in a CO<sub>2</sub> incubator can be created in a compact body on the microscope stage. Long-term stable observation is the result.



【Dish Attachments】



【Stage control unit & Joy-stick】



### Wide Range of Applicable Dishes

Applicable to multi-well plate and 35mm dish as standard feature. Optional adaptors available for 50/60 mm dish, chamber slide, Chambered Cover Glass, Slide Glass.

## Control Units

For use with Chamber Unit, 3 different Control Unit types are available to choose from to fit user requirements.

Individual temperature settings of multiple heaters create optimum temperature and humidity conditions with ease and enable long-duration tissue/cell incubation.



#### INUG2 Control Unit

With built-in digital gas mixer  
(For 100%CO<sub>2</sub> cylinder use)

Built-in gas mixer creates 5%CO<sub>2</sub>+95% air mixed gas from 100%CO<sub>2</sub> for stable supply to Chamber Unit

Setting temperature range : Ambient to 50°C

Dimensions : W175×D260×H282 (mm)

Model : INUG2A-WDSMP(110V)  
INUG2E-WDSMP(220V)

#### INU-F1 Control Unit

With a gas flowmeter for premixed gas  
(For premixed gas cylinder use)

Float type gas flowmeter supplies premixed gas into Chamber unit at stable 5% concentration

Setting temperature range : Ambient to 50°C

Dimensions : W160×D260×H200(mm)

Model : INU-WDSMP-F1

#### INU Control Unit

With no gas supply function

For use with external gas supplier or when no gas supply is required

Setting temperature range : Ambient to 50°C

Dimensions : W160×D260×H200(mm)

Model : INU-WDSMP

● CREATE YOUR OWN SYSTEM !! We welcome custom orders to meet your needs. Please contact us for details.

# Stage Top Incubator<sup>®</sup> WDSMP Series

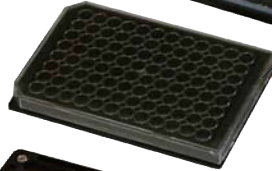
## Clear Vision Top Heater Clear Glass Heater

Clear glass heater in Top Heater prevents condensation buildup in top of Chamber Unit, allowing clear, continuous illumination transmission. Constant long and short-term time-lapse image quality is the result.



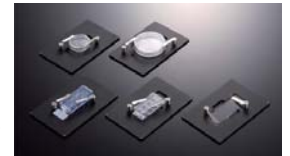
## High-humidity Tank Unit

Bath heater maintains constant high-humidity and CO<sub>2</sub> supply. Provides essential environment factors for cell culture, enabling long-term Live Cell Imaging under microscope. INU expands research possibilities.



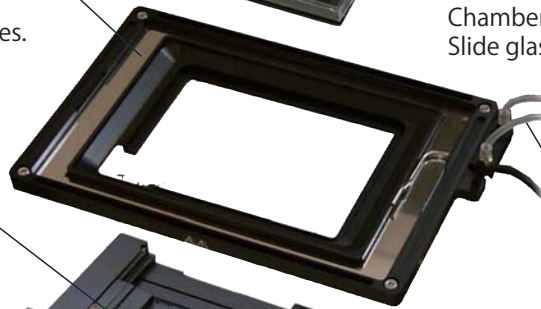
## Correspondence normal to a well-plate

adapters available for 35mm dish, 50/60mm dish, Chamber Slide, Chambered Cover Glass, Slide glass



## Stage Heater Anti-Z-Axis Drift Design and Accurate Temperature Control

The configuration of the Stage Heater is specifically designed to match the microscope stage to be installed. Tokai Hit's unique technology minimizes focus drift to provide optimal conditions for confocal applications and time-lapse/long-term imaging procedures. Features of INU provide the perfect solution to stable Live Cell Imaging.



## Water Supply

For long-term incubation, additional distilled water can be supplied from side port. Continuous operation over 2 days is possible.

## Gas Inlet

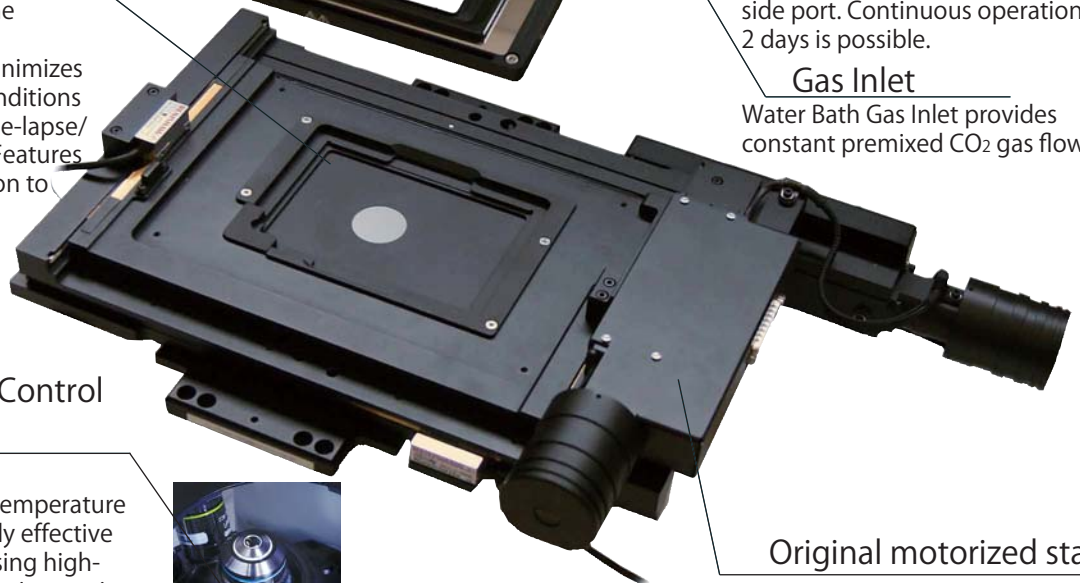
Water Bath Gas Inlet provides constant premixed CO<sub>2</sub> gas flow.

## Optimal Close-up Objective Temperature Control Lens Heater

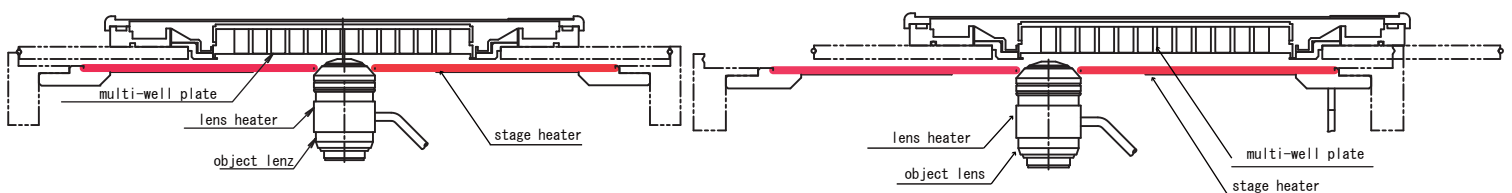
Ease of set-up and operation  
Lens Heater optimizes objective temperature within 20 minutes and is especially effective for close-up heat control when using high-magnification lenses and oil/water immersion lenses. Lens heater can be applied up to  $\Phi 40$  mm objectives.



## Original motorized stage



## Cross Section of WDSMP



With large Stage Heater embedded in motorized stage, all the wells are kept at uniform temperature wherever they are positioned during multi-point time-lapse.

**TOKAI HIT<sup>®</sup>** TOKAI HIT CO., LTD. / [www.tokaihit.com](http://www.tokaihit.com) - [sales-os@tokaihit.com](mailto:sales-os@tokaihit.com)

306-1 Gendoji-Cho, Fujinomiya-Shi, Shizuoka-Ken,  
418-0074 Japan  
Phone: 81-544-24-6699 / Fax: 81-544-24-6641



Please pay special attention to items marked with Caution and warning symbols as shown on the left.  
Read Instruction manual carefully before using the device

-Catalog printed September 2007

-Specifications and products in this catalog are subject to change without any obligation on the part of the manufacturer/distributor

SLPR0173